

Memorial Field Update

Abington School District/Pennsylvania
State University, Abington College

Abington Board of School Directors

October 25, 2011

Presentation Overview

- Brief review of the Memorial Field site and current utilization of the property
- Brief review of the Penn State proposal to improve the site
- Projected utilization of the upgraded property
- Components of a lease agreement
- Next steps that will require Board action
 - Approval of a lease agreement
 - Authority to formally submit plans for approval

Abington School District Property Committee

December 1, 2008

- Establish an ASD-PSU Memorial Field Project Team
- Penn State conducts an architectural study
- ASD Board reviews architectural plan
- ASD engages legal counsel for the Township review and approval process
- ASD-PSU lease agreement developed with the solicitor
- Advertisement, award, and construction begins

Abington School District Board Resolution

December 9, 2008

19. **Abington School District/Pennsylvania State University, Abington College Memorial Field Project Team**

Pennsylvania State University, Abington College and the Abington School District desire to renovate the facilities available at the Memorial Field location. This renovation project will provide a positive outcome for students of both entities as well as the organizations that use these facilities on a permit basis. The first step in the process is to establish a project team.

Recommendation: That the Board of School Directors authorize the Superintendent to appoint district representatives to serve on the Memorial Field Project Team and will recommend additional resolutions as deemed necessary.

Abington School District Board Resolution

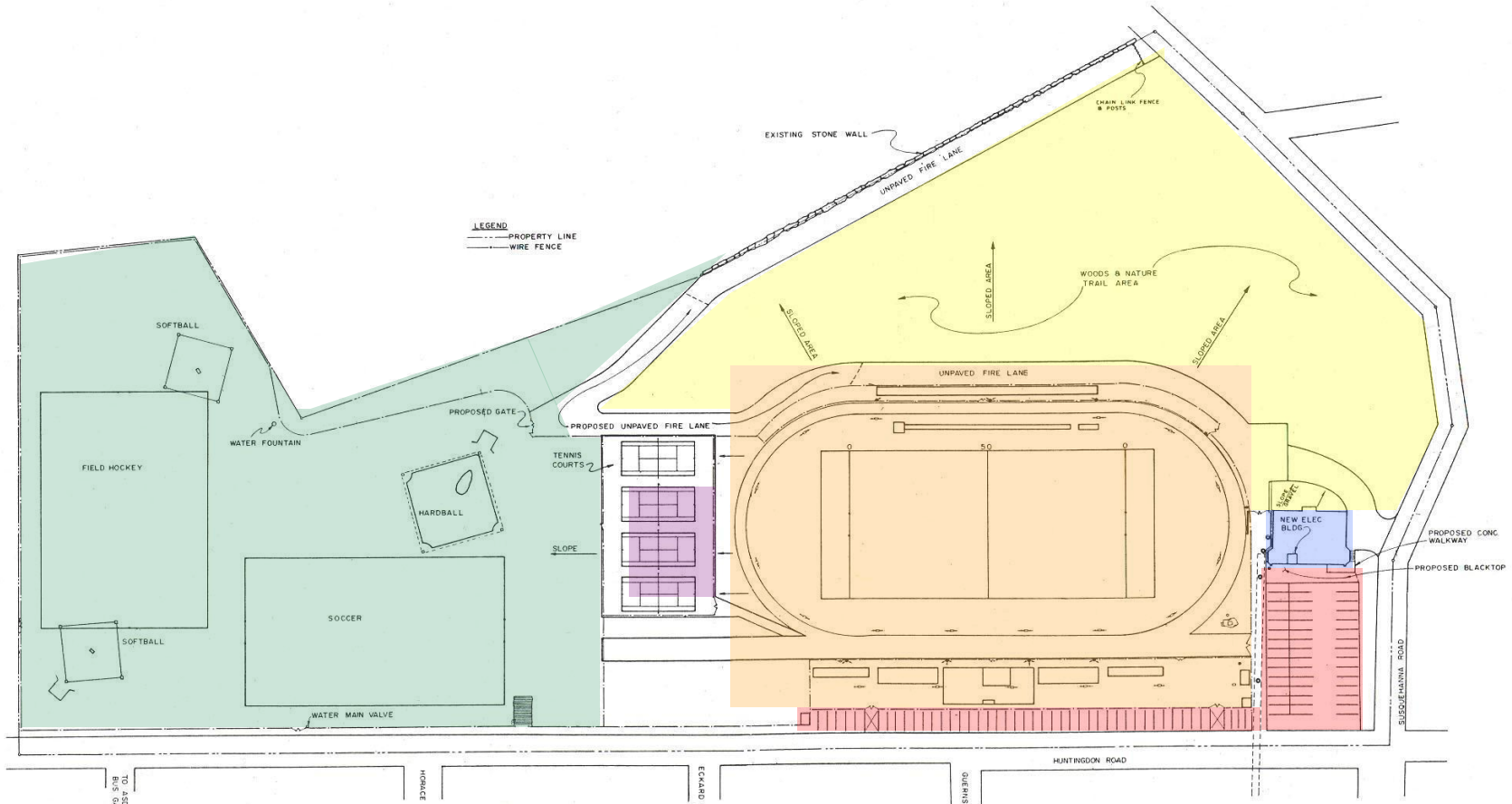
June 8, 2010

20. **Abington School District/Pennsylvania State University, Abington College Memorial Field Project Team**

Pennsylvania State University, Abington College and the Abington School District desire to renovate the facilities available at the Memorial Field location. This renovation project will provide a positive outcome for students of both entities as well as the organizations that use these facilities on a permit basis. The first step in the process was to establish a project team, and we are now ready to move forward with this project. Board updates will be presented as tasks are nearing completion.

Recommendation: That the Board of School Directors authorize the Administration to work with the solicitor's office and Penn State University, Abington College to obtain approval of the architectural plans with local, state, and county submittal offices and to develop a long-term lease agreement with Penn State University, Abington College.

Current Configuration of Memorial Field



Power House Storage Facility

Athletic Field and Bleachers

Baseball /Soccer Fields

Parking Facilities (84)

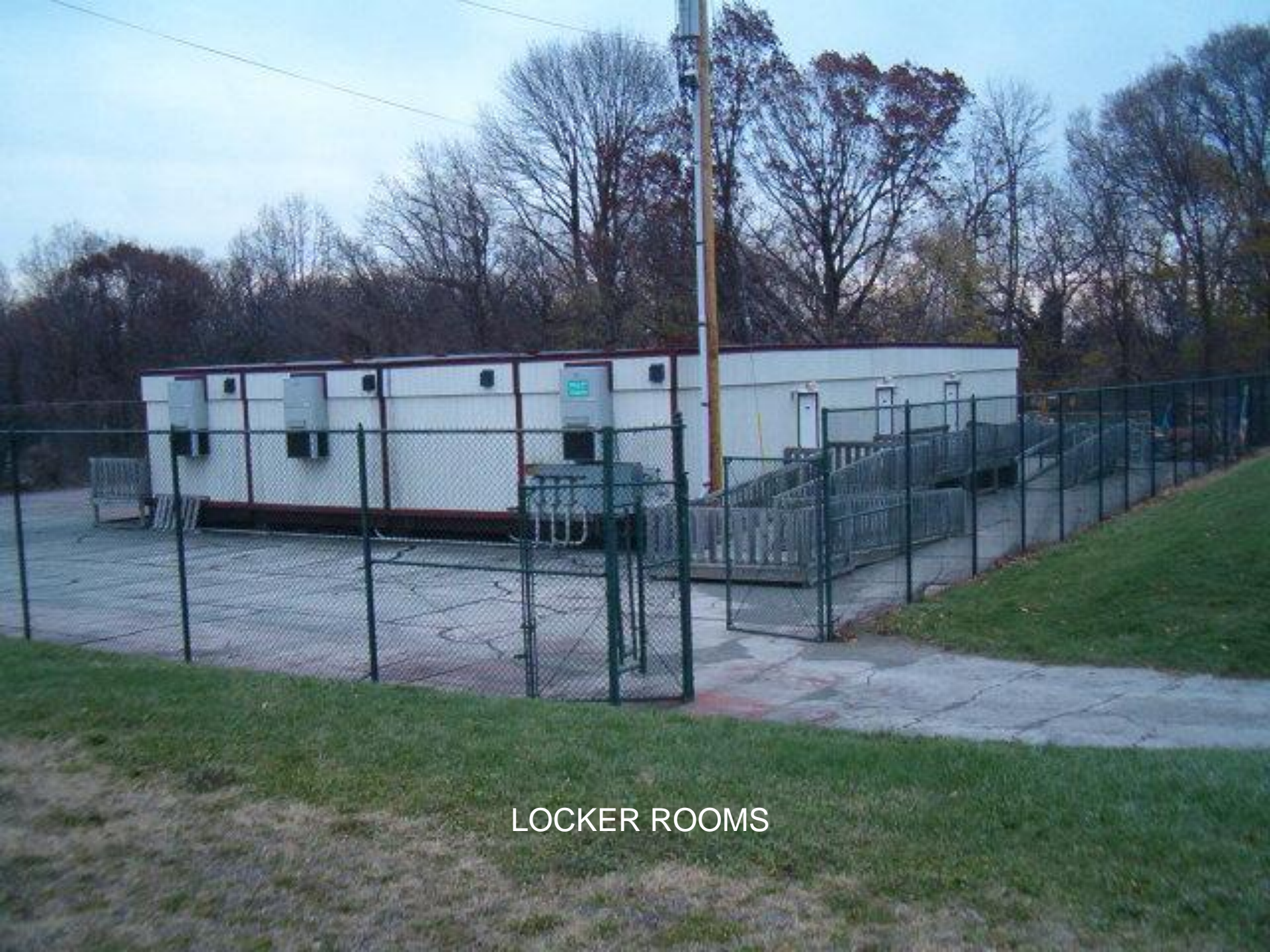
Locker Rooms and Coach's Office

Undeveloped Land

ABINGTON SCHOOL DISTRICT		
ABINGTON TWN. MONTGOMERY CO., PA. 19001		
SCALE:	APPROVED BY:	DRAWN BY:ARA
DATE: 7-27-81	REVISI:	
HUNTINGDON JR. - MEMORIAL FIELD		
LOCATION CODE #13	2 of 11	



HOME BLEACHERS



LOCKER ROOMS



LOWER FIELDS

Current Use of Memorial Field by Abington School District

- Approximately 24 Athletic Department events per year:
 - Abington Junior Varsity Football Games
 - Conducted in the fall/usually 50 spectators or less at games
 - Abington High School Varsity Girls' Soccer
 - Conducted in the fall/usually 50 spectators or less at games
 - Back-up Site for Fall Soccer
 - Spring/Summer Football Camps and Clinics
 - Conducted on an occasional basis in the spring and summer/these are not spectator events
- On-site parking is adequate

Current Use of Memorial Field by Community Groups

- Community Groups:
 - Abington Lacrosse Club
 - Abington YMCA – Gobble Wobble
 - CAPT 24-Hour Relay
 - Kappa Alpha Psi - Track
 - Our Lady Help of Christians – Track
 - Penn State Abington since 1995
- General Public:
 - Walking track available for use

Current Use of Memorial Field by Penn State

- Memorial Field and lower fields used for daily practices and for games from late August through October and March through April:
 - Men's and Women's Lacrosse
 - Conducted in the spring/usually 50 spectators or less at games
 - Men's and Women's Soccer
 - Conducted in the fall/usually 50 spectators or less at games
 - Women's Softball
 - Conducted in the spring/usually 50 spectators or less at games
- On-site parking is adequate

Penn State Abington College Plan

Potential Upgrades to Memorial Field

- Install an artificial turf field for soccer, lacrosse, and field hockey
- Install updated non-competition all-weather track
- Redesign and install new bleacher seating
- Install lighting for night competitions
- Install new fencing that maintains public access to the track and lower fields
- Renovate tennis courts

Penn State Abington College Plan

Potential Upgrades to Lower Field

- Retain “skinned” softball field
- Upgrade grass practice field for soccer and lacrosse
- Design and install stairs for access between lower and upper fields
- Evaluate fencing and install new or replacement fencing if needed

Purpose and Outcomes of the Memorial Field Upgrade Project

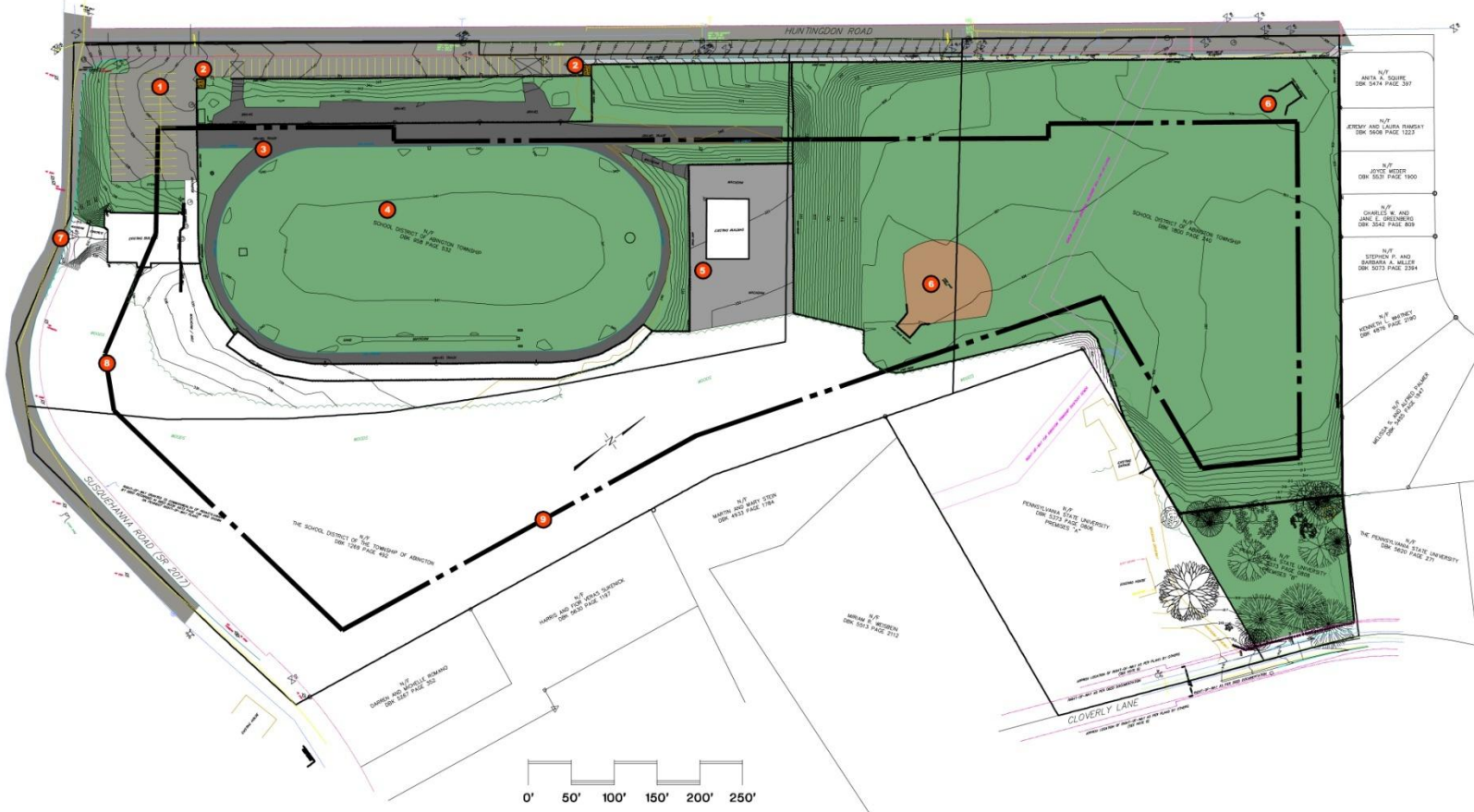
- Create a win-win-win for the Abington School District, the Community, and Penn State Abington
- Provide upgraded playing fields
- Leverage resources over the long term for immediate effect
- Outcomes: improved utility, esthetics, and accessibility

Penn State Abington College Plan

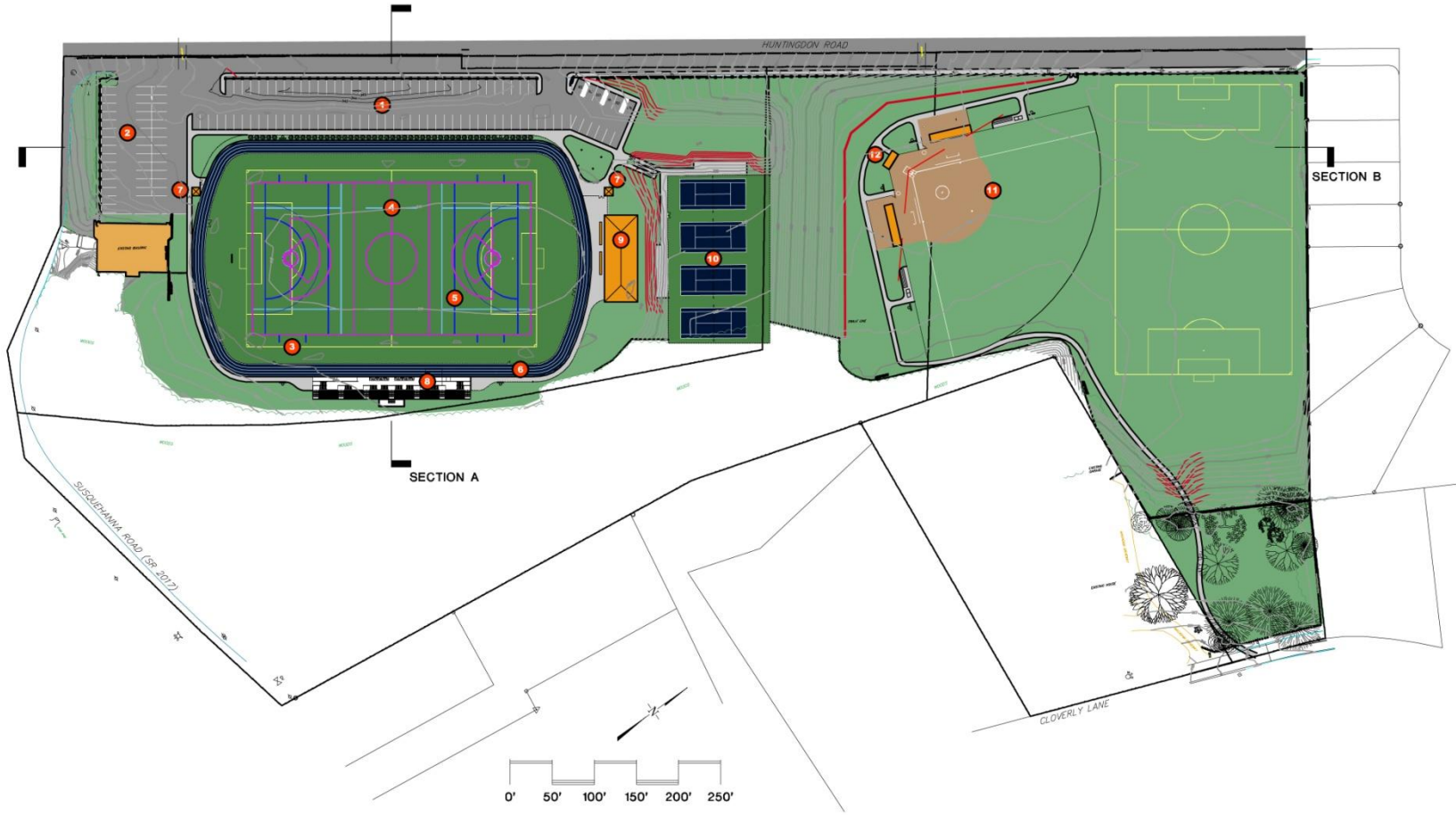
Proposed Upgrades to Memorial Field

- Penn State engaged Highland Associates to develop initial plans that reflect the proposal
- Plan reflects a three phase project
 - Phase I: Memorial Field Upgrade
 - Phase II: Tennis Court Upgrade
 - Phase III: Lower Field Upgrade
- Architect's Estimated Project Cost: \$5 million
- Project funding from three sources: Penn State Abington, philanthropy, and student fees raised over three to five years

- 1 Existing Parking
84 spaces
- 2 Existing Sheds
- 3 Existing Track
- 4 Existing Field
- 5 Existing Tennis Courts (4)
- 6 Existing Ball Fields
- 7 Boundary Line
- 8 Setback Line
100' Susquehanna/Huntingdon
- 9 Setback Line
50'



- 1 **Expanded Parking**
(94 total spaces)
(6 accessible spaces)
- 2 **Expanded Parking**
141'x105' - Existing Lot
(41 total spaces)
- 3 **Soccer Field**
75yd x 120yd
(225'x360')
Facilities Include:
Turf Surface
Lighting
Scoreboard
Underground Storm Water Retention
- 4 **Lacrosse Field**
80yd x 110yd
(180'x360')
Men's
Women's
- 5 **Field Hockey Field**
80yd x 100yd
(180'x300')
- 6 **Walking Track**
1,200'
Synthetic Surface
- 7 **Ticket Booth**
Ticket Window
- 8 **Grandstands**
Facilities Include:
470 Total Seats
10 ADA with 10 Companion Seats
Elevated Area for Game Photographs
- 9 **New Field House**
Facilities Include:
Dry Team Room/Lockers
Accessible Toilet Rooms
Storage Area with Rollup Garage Door
- 10 **Refurbished Tennis Courts**
Facilities Include:
Regraded Entrance
Asphalt Pads for Spectators
- 11 **Softball Field**
225' x 225' x 225'
Facilities Include:
Scoreboard
Lighting
Dugouts
Seating for 90 People
- 12 **Storage**
ADA Toilet Room
Upper Level Press Box





HIGHLAND

Planned Use of the Upgraded Memorial Field by Penn State

- Continued daily use for practices from late August through October and March through April
- Four sports will compete and practice on Memorial Field, which include:
 - Men's and Women's Lacrosse
 - Men's and Women's Soccer
- Continue current women's softball team on lower field
- Approximately 14 games a season generally scheduled early afternoons on weekends with 50 spectators or less at a game
- On-site parking is adequate

Projected Use of an Upgraded Memorial Field by Abington School District

- Approximately 30 games scheduled by the Athletic Department per year with 50 spectators or less expected
 - Abington High School Boys' Soccer
 - Abington High School Girls' Soccer
 - Use for football will be discontinued
- New venue for field hockey games
- Continued back-up use on occasional basis for lacrosse
- Expanded availability for school use for selected events
- On-site parking is adequate

Projected Use of an Updated Memorial Field by Community Groups

- Community Groups:
 - Abington Lacrosse Club
 - Abington YMCA – Gobble Wobble
 - CAPT 24-Hour Relay
 - Kappa Alpha Psi - Track
 - Our Lady Help of Christians – Track
- General Public:
 - Walking track continues to be available for use
 - Tennis courts now available for public use
- Expanded availability for the community

Components of a Lease Agreement

Abington School District and Penn State Abington College

- Long-term lease
- Cancellation clause if ASD requires property
- Penn State underwrites funding of project costs from the feasibility study through project completion
- ASD manages the project with PDE, local, county, state, and Federal agencies and in compliance with all applicable laws, rules, and regulations

Components of a Lease Agreement

Abington School District and Penn State Abington College (continued)

- Shared use of Memorial Field by ASD and Penn State for athletics with coordinated schedules
- Penn State requires exemption for use of field for occasional Sunday competitions
- Maintain public access to the track and lower fields and tennis courts
- Access by the community through ASD permitting process for CAPT 24-Hour Relay, Abington Lacrosse Club, Hunter Soccer, etc.
- Provision for security and maintenance

Next Steps

- ASD-PSU lease agreement developed with the solicitor
 - Board approval of a lease agreement
- ASD review and approval of submittal plans for the project
 - Board authorization to formally submit plans for Township review
 - ASD engages legal counsel for the Township review and approval process for the project
- ASD-PSU Memorial Field Project Team continues work as the plan is developed through the formal submission to the Township
- Advertisement, award, and construction begins
 - Board action for Permission to Advertise
 - Board action for Award of Contracts