

GALLUP® Student Poll

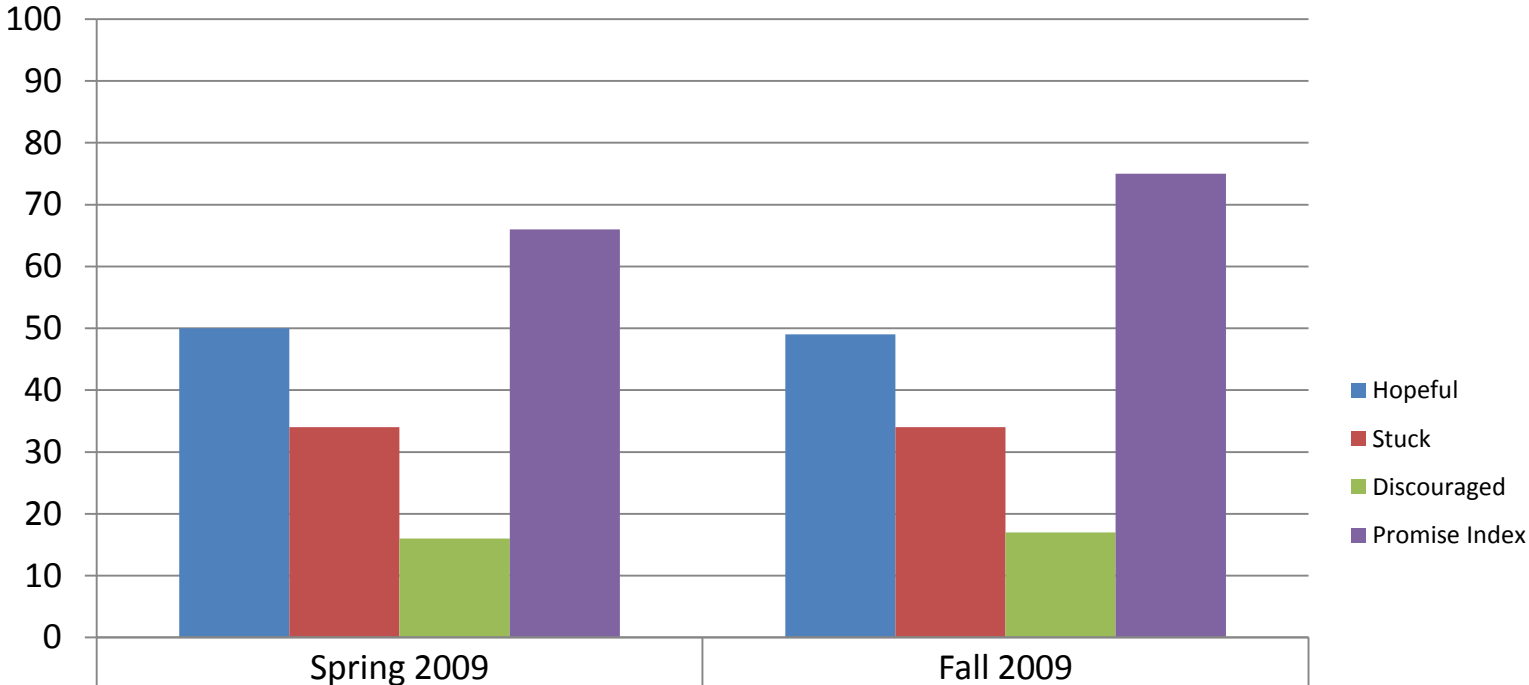


RESULTS FOR THE ABINGTON SCHOOL DISTRICT

**Prepared for the
Board of School Directors
November 24, 2009**

DISTRICT SCORECARD – HOPE

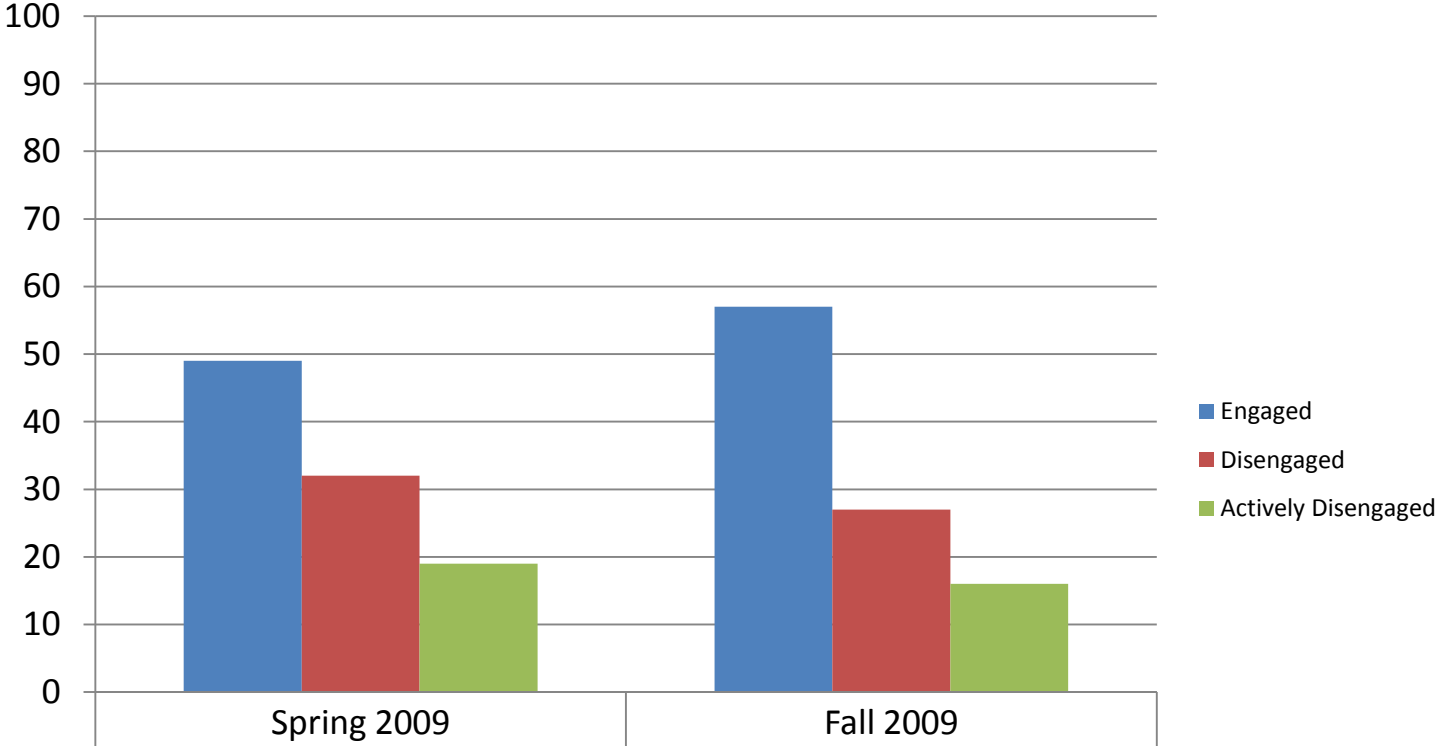
Percent of Students



	Spring 2009	Fall 2009
Hopeful	50	49
Stuck	34	34
Discouraged	16	17
Promise Index	66	75

DISTRICT SCORECARD – ENGAGEMENT

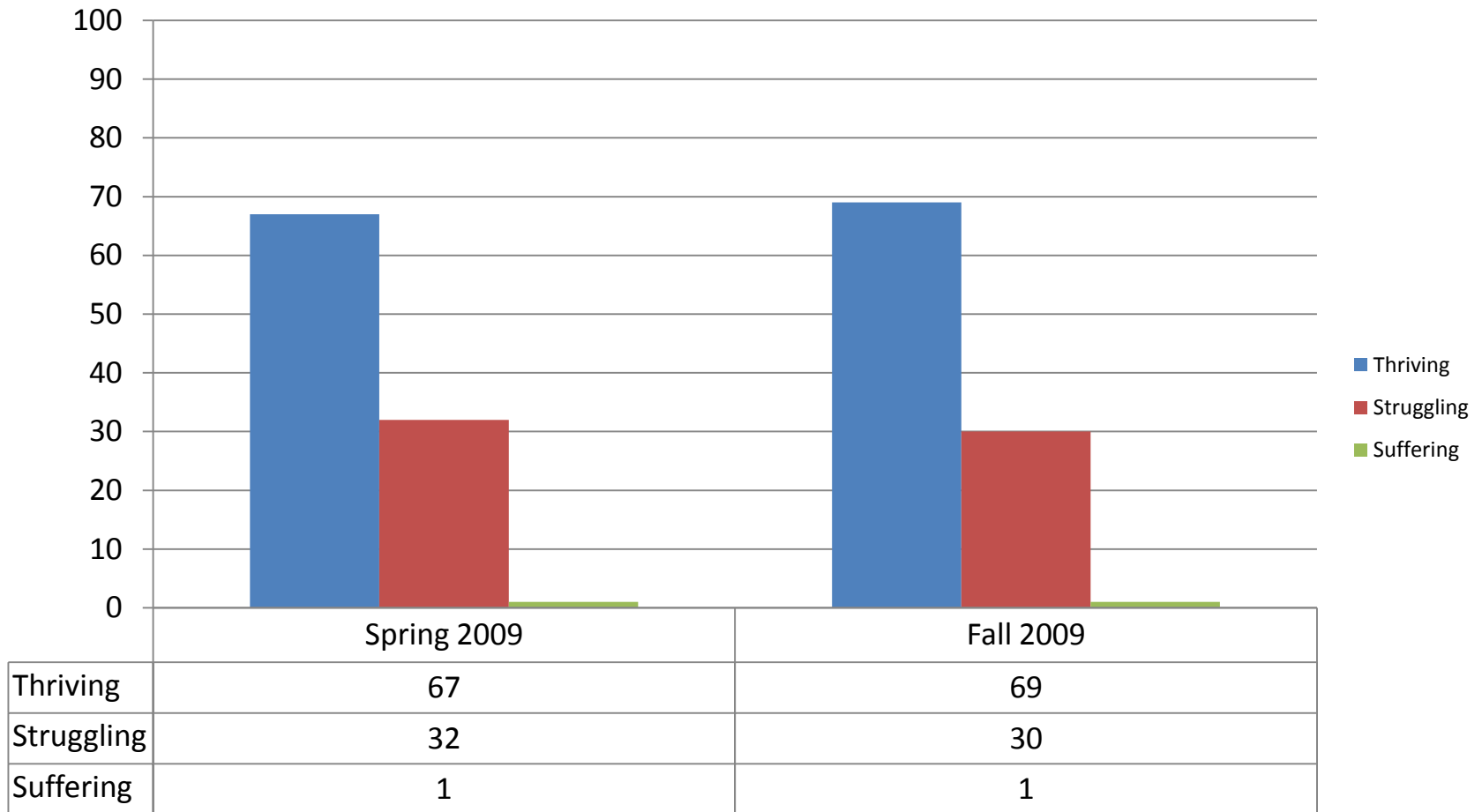
Percent of Students



Engaged	49	57
Disengaged	32	27
Actively Disengaged	19	16

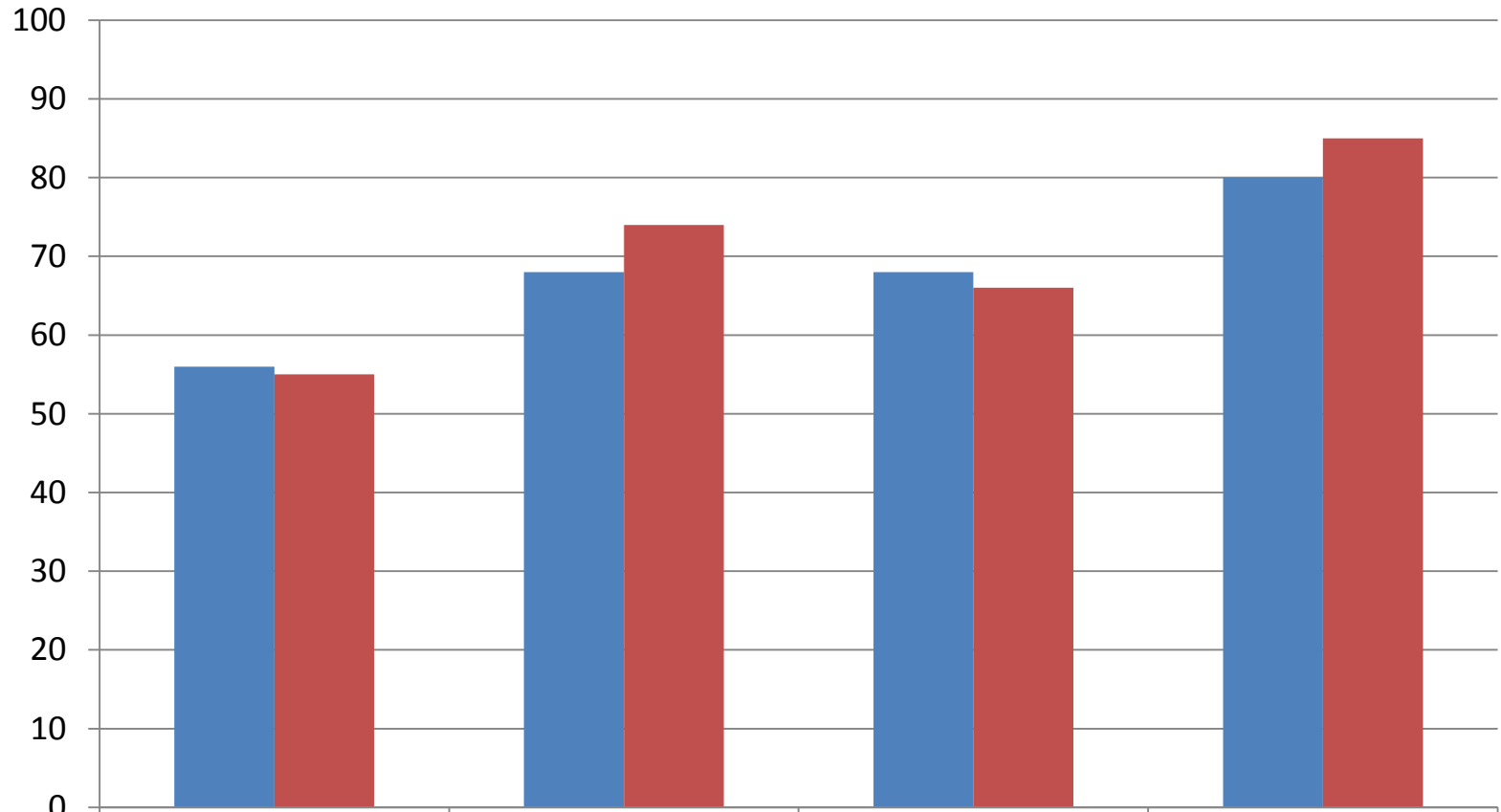
DISTRICT SCORECARD – WELL-BEING

Percent of Students



ELEMENTARY SCHOOLS SCORECARD

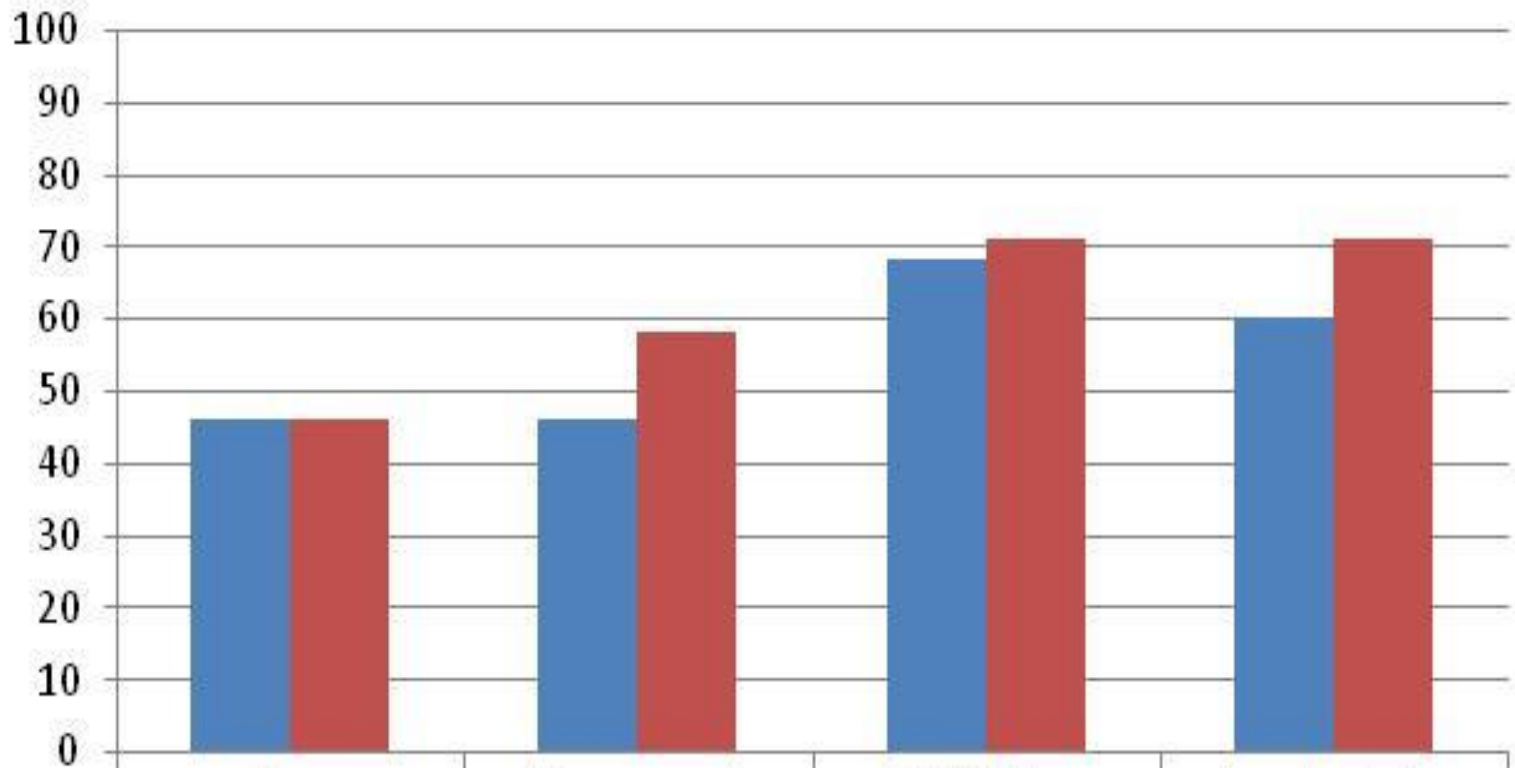
Percent of Students



	Hope	Engagement	Well-Being	Promise Index
Spring 2009	56	68	68	80
Fall 2009	55	74	66	85

JUNIOR HIGH SCHOOL SCORECARD

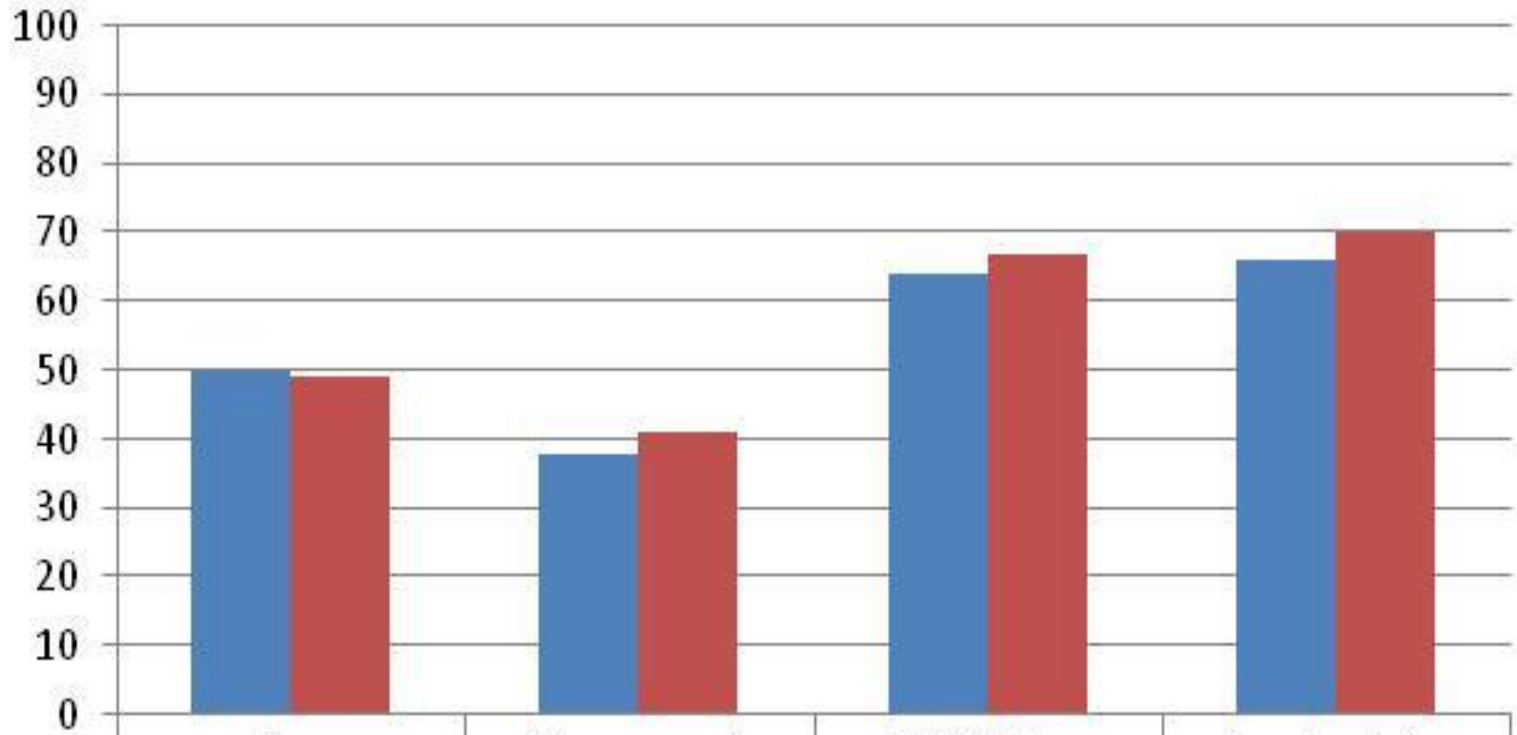
Percent of Students



	Hope	Engagement	Well-Being	Promise Index
Spring 2009	46	46	68	60
Fall 2009	46	58	71	71

SENIOR HIGH SCHOOL SCORECARD

Percent of Students



	Hope	Engagement	Well-Being	Promise Index
Spring 2009	50	38	64	66
Fall 2009	49	41	67	70

SUMMARY

- Continue to gather baseline data
- Continue to track progress
- Utilization of data to assist in evaluating our programs
- Target 5th to 8th grade to improve hope, engagement, and well-being
- Talk to students about the future
- Recognize student accomplishments
- Help students develop ways to overcome obstacles in order to improve grades and overall school performance